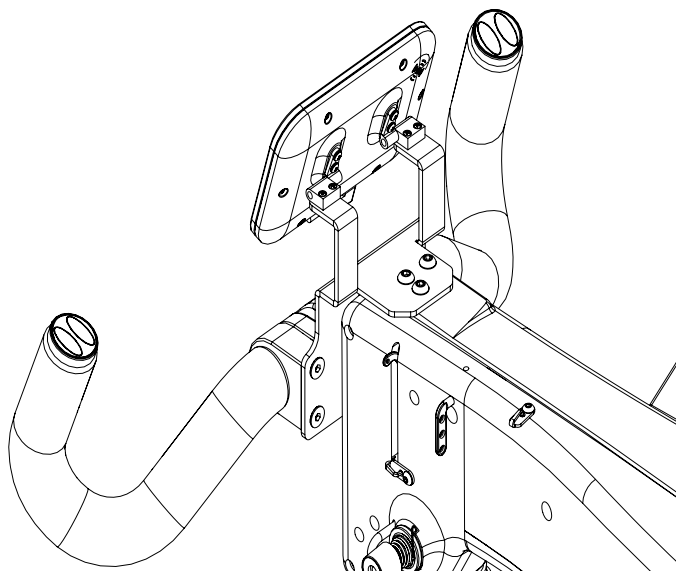
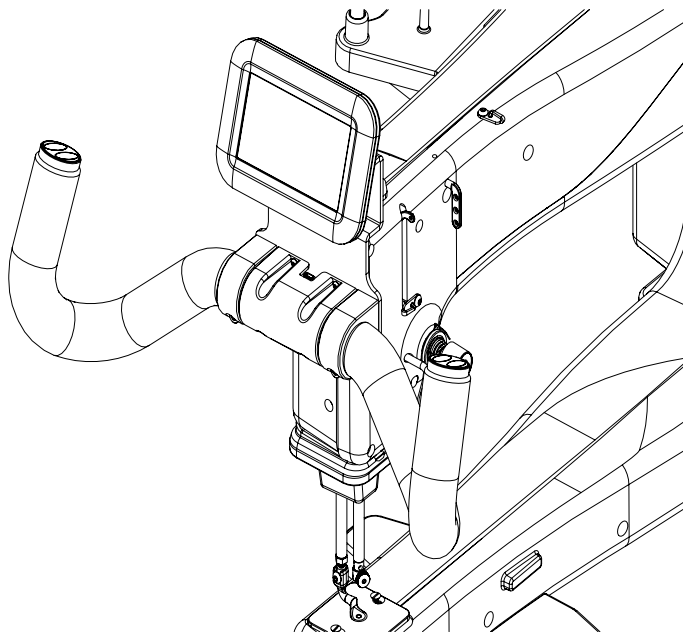


King Quilter Front Handlebar

Installation Instructions

09/04/18



QM29004 Boxed Front Handlebar


Package Contents:

1 qty QM29303 Front handlebar assembly with 4.3" front display mounted to handlebar

3 qty QM10955 Screw, M6x16 SKB SS, bagged and wrapped on handle

1 qty QM23010 Cable, display to handlebar

1 qty QM23011 Cable, handle to machine

 Note: These instructions explain how to install the front handlebars to the machine. For handlebar functionality, please see the machine user manual.

Installing Front Handlebars

△ **CAUTION:** Unplug the King Quilter from the electrical outlet. All power to the machine must be turned off when installing the front handles. Failure to do so can result in damage to the machine and or the handlebars.

1. Locate the three M6 x16mm button head hex screws and the 4mm Hex wrench (included with the machine accessories). To install the handlebar, line up the holes on top of the handles with the pre-drilled holes on top of the machine. Slide a single screw into one of the holes until it stops. Hand-tighten the screw enough to secure the handles to the top of the machine.
2. Insert and hand-tighten the remaining two handlebar screws.
3. Use the included 4mm Hex wrench to securely fasten the handles to the front of the machine.
4. The display will come pre-assembled to the handlebar assembly with two hinges and two screws each.

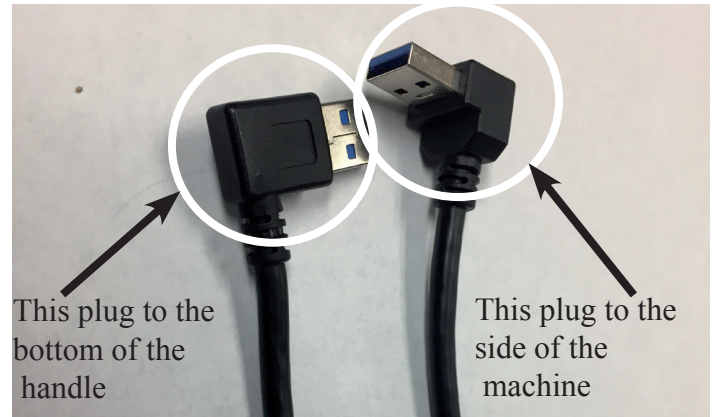
➡ **Important Note:** The front handlebars have a large USB connection on the bottom of the display. This USB connector is not used to connect the handlebar to the machine but only for updating the display. This USB connection normally has a black plug in it; this is to deter the user from using this connection to plug the handlebar into the machine. The black plug needs to be removed to update the display or machine.



Front Handlebar to Machine Connection

Note: The handlebars have two cables; one connects the display to the handlebar, with small USB connections. The other cable connects the handlebar to the machine with large USB connections.

5. Connect the large USB cable from the handlebar to the machine. The Lo End front handlebars have a large USB connection on the handlebar (not the display) that connects the handlebar to the machine.



This plug to the bottom of the handle

This plug to the side of the machine

QM23011 Handlebar to machine large USB cable

The machine connection is found on the side opposite the top tension assembly on the machine and is just in front of the spool support tray.



Machine large USB connection for front handlebar large connector

Top Cable: Front handlebar, the small/mini USB connection on top of the handlebar goes to the display.



Top cable connector is small and goes to the display. Bottom cable is large and goes to the machine.

Front Handlebar to Machine Connection - Continued

Handlebar to Display Connection Cable, mini USB 90 degree to mini USB 90 degree..




QM23010 Handlebar to Display Connection Cable

Basic front handlebar connection: The top cable is the QM23010 mini USB cable connecting the handlebar to the display. The bottom cable is the QM23011 large USB handlebar to machine connection cable.



Top cable: handlebar to display QM23010; Bottom cable: handlebar to machine QM23011.

 Note: These instructions explain how to install the front handlebars to the machine. For handlebar functionality, please see the machine user manual.