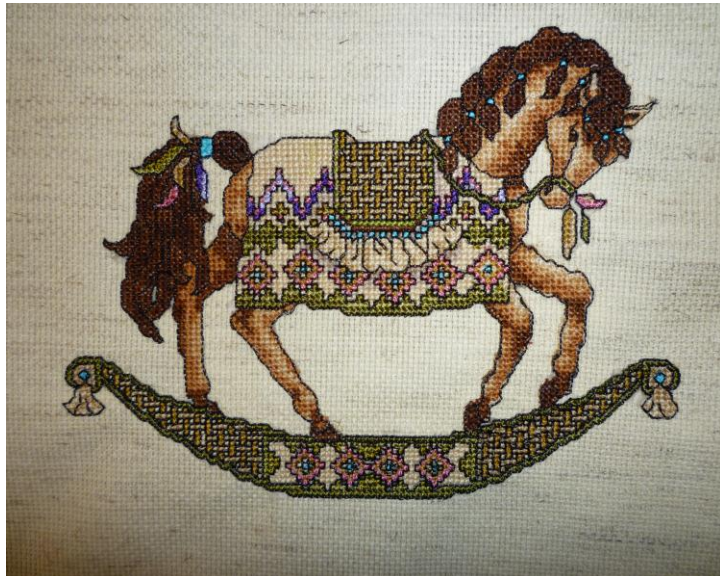


SewingMachinesPlus.com CLASS INFORMATION
760-739-8222 or 800-401-8151

Name of Class	Cross Stitch Machine Embroidery
Date(s) and	Tuesday, July 30, 2012
Times of class	10 am to 5 pm
Cost of class	\$30
Class description	Your machine embroidery can look like a hand done Counted Cross stitch. You have a choice of two projects: "Nantucket Rose" or the single-hooped rocking horse "Diamond". Bring a book to read!! A game to play! Machine cross stitch needs to be babysat and takes a wee bit of time!! It IS worth it!!!
Supply list	Read all the attached notes carefully for the complete supply list.
Instructor	Karan Murray

CLASS REGISTRATION PROCEDURES You can register for any class in the store. If you are paying by credit card, you can register by mail or phone. **The registration fee for the class must be received to reserve your space.** Most classes have a minimum number of students to run. If we do not meet the minimum number of students for the class three (3) days prior to the class, we will notify you that the class is cancelled. If your class is not held for any reason, you may transfer to another class or receive a refund. You may cancel for a full refund up to four days prior to the class. No refunds can be given within three days prior to a class.
Nantucket



Diamond (left)
Nantucket Rose (right)

Nantucket Rose

DMC Colors Recommended	Colors I used
SKIN, BLOUSE, RIBBON ON BOTTOM OF SKIRT	
1. 758, Terra Cotta, Very Light	Mettler 1060
2. 3778, Terra Cotta, Light	DMC 754
ROSES, BRICK CHIMNEY	
3. 225, Shell Pink, Ultra Very Light	
4. 224, Shell Pink, Very Light	
5. 223, Shell Pink, Light	
6. 3722, Shell Pink, Medium	
7. 3721, Shell Pink, Dark	
8. 221, Shell Pink, Very Dark	
9. 902, Garnet, Very Dark	
HAIR, TREE TRUNKS, BASKET	
10. 3047, Yellow Beige, Light	
11. 3046, Yellow Beige, Medium	
12. 3045, Yellow Beige, Dark	
13. 420, Hazelnut Brown, Dark	
14. 801, Coffee Brown, Dark	
15. 938, coffee Brown, Ultra Dark	
16. 3371, Black Brown	
PATH BY HOUSE, CHIMNEY	
17. 613, Drab Brown, Very Light	
18. 612, Drab Brown, Light	
19. 611, Drab Brown	
20. 610, Drab Brown, Dark	
21. 632, Desert Sand, Ultra Very Dark	
FOLIAGE AROUND HOUSE, OCEAN	
22. 734, Olive Green, Light	
23. 733, Olive Green, Medium	
24. 732, Olive Green	
25. 730, Olive Green, Very Dark	
26. 928, Gray Green, Very Light	
27. 927, Gray Green, Light	
28. 926, Gray Green, Medium	

DIAMOND (Finished Size: 6.32 x 4. 72 (161 x 120 mm)

DMC Colors	Colors I actually used
HORSE, MANE , TAIL	
1. 738, Tan, Very Light	
2. 437, Tan, Light	
3. 435, Brown, Very Light	
4. 434, Brown, Light	
5. 433, Brown, Medium	
BLANKET, BASKET WEAVE IN SADDLE & ROCKER	
6. 739, Tan, Ultra Very Light	
7. 842, Beige Brown, Very Light	
8. 422, Hazelnut Brown, Light	Robison Anton 5870
9. 3045, Yellow Beige, Dark	Robison Anton 5501
TRIM AROUND SADDLE, RUFFLES, ROCKER	
10. 370, Mustard, Medium	Isacord 1706
11. 841, Beige Brown, Light	
12. 3012, Khaki Green, Medium	Madeira Rayon 1106
13. 3011, Khaki Green, Dark	Madeira Rayon 1156
14. 3013, Khaki Green, Light	Madeira Rayon 1190
DIAMOND DESIGN IN BLANKET, AND ON ROCKER	
15. 758, Terra Cotta, Very Light	DMC 760
16. 356, Terra Cotta, Medium	Robison Anton 9164
17. 3042, Antique Violet, Light	Floriani 622
18. 3041, Antique Violet, Medium	Floriani 665
19. 597, Turquoise	Isacord 4122
20. Black	Any Brand

I used aida cloth, and when I do I use 16 or 18 count. This will look beautiful on almost **ANY** material. I often use Broadcloth, or a linen look. I used an iron on (No Show Mesh) and Perfect stick, (water back works just as well) float one sheet of stabilizer on the back. If you are going to use a lighter weight cloth, such as the aida cloth, use 2 pieces, unless you feel you are OK. I use Hoop it All dry Cover-Up CLEAR Permanent Vinyl Topping on the top. It is **NOT** water soluble, but came off easily and held the fabric beautifully. The topping is to see where the needle goes

through, but the thread does not so you can back track easily. It also gives “lift” to the project. If you want to use water soluble or an iron off, that's great, too.

REMEMBER: ANYTHING you purchase at SMP for this class is 10% off.

- Stabilizer: See above.

*Scissors (Snips) , tweezers **both are a must**

- Bobbins and your choice of bobbin thread: I recommend The Finishing Touch sold at SMP

- Machine Needle - I use Microtex, 90/14

- Scotch and masking tape (I use the masking tape to pick up the cut threads on the project, and the scotch tape to keep the material lined up while hooping).

*the scissors I use are the small snips, also sold at SMP. It is difficult to get close to the fabric to trim the jump stitches with other types of scissors. Jump stitches **NEED** to be trimmed or the work looks very messy.

- **Always** bring **extra material** and backing, especially when doing multiple hoopings. You will need **extra** for the hoop to hold your project tight, if your material isn't big enough. This project is a two hoop project for all hoops that are 11 x 7 & 12 x 8. You will need a plastic ruler, like the “Clearview “ 24 “ ruler. Quilter's chalk, or something that disappears, or washes off, to mark your material for guidelines when placing your pattern.

ANYTHING that calls for beads, or “Kreinik” Threads is already digitized with metal or regular thread. The beads can be applied after the project is completed, with jewel glue, hot fix, or not at all. The project is just as beautiful without all the beads. The beads can be converted to a matching DMC thread.

- ❖ Kreinik thread is a hand floss metal thread, and I have tried to match it, as best as possible with the machine threads. You can see the color; it is in the chart, and you can match different colors if you don't care for what I have chosen.

All colors are DMC, used from the **original** cross stitch chart/pattern.

DMC machines threads are the same color as hand floss threads, but are in a very limited color range. Because of this, you will need to substitute colors with other types of threads. You will need to use a DMC Floss Chart to compare the colors used in the pattern, to the colors you will need to replace them with. You CAN use sewing threads. Once the project is finished you will NOT be able to tell what thread is what!

If you do not have one go to Google, type in dmc thread chart, and go to (pdf) DMC Floss Color Chart (the second site down from the top has the better chart set up)... you can use the site (which is pretty good matching) or print out the chart. I recommend doing it on the “best” print with a good quality paper, or even a photo paper, for better results.

Any colors in the patterns I use that specify DMC floss can be found on the chart and held against other types of threads to match as close as possible. The first page is your “Key to color numbers”. (It’s the page with nothing but numbers on it) On the left, in white, will be the DMC number of the color you are looking for, and on the right, in yellow, is a number that indicates the page it will be found on. I have made a copy for SMP to have to be of help to you.

What I am sending you, is a grouping of the colors in a particular area, ie; face or skin, dress, flowers etc., but that is not necessarily the order of the colors in regards to stitching out the pattern. Use this ONLY to locate your colors for you project, NOT as the order to stitch it out. Just use this to locate your colors. Generally, they will be from light to dark...but NOT ALWAYS. You will see the left side is ALL DMC colors, on the right, if I have used a different thread company, it is listed there. The type of thread and the number will be there, and if they are there, it means I have used that specific color. You don’t have to use what I use, it’s just suggested.

Please be prepared to purchase the cross stitch chart for these projects. This is how we comply with the copyright laws, and how you will know where to place the beads, and crystals. They will run up to about \$17.00 to \$20.00, sometimes, less, sometimes more.

AND PLEASE....specify which project you are doing.