



creative performance™

Quilt

Approximate Size: 42" x 60"  
(110 x 150 cm)

## Supplies:

- PFAFF® creative performance™ sewing and embroidery machine
- 6" x 45" (15 x 115 cm) Yellow cotton fabric (Row 2)
- 6" x 45" (15 x 115 cm) Purple cotton fabric (Row 3)
- 6" x 45" (15 x 115 cm) Fuchsia cotton fabric (Row 4)
- 5" x 45" (12 x 115 cm) Rose cotton fabric (Row 5)
- 5" x 45" (12 x 115 cm) Orange cotton fabric (Row 6)
- 1/3 yd x 45" (30 x 115 cm) Beige/Grey cotton fabric (Row 7)
- 1/3 yd x 45" (30 x 115 cm) Beige tone on tone cotton fabric (Row 8)
- 1 3/8 yds x 45" (130 x 115 cm) Beige Print cotton fabric (Rows 1, 9, 12, 14 and Binding)
- 5/8 yd x 45" (60 x 115 cm) Taupe cotton fabric (Rows 1, 10, 14)
- 1/2 yd x 45" (40 x 115 cm) Purple velveteen fabric (Row 11)
- 5/8 yd x 45" (60 x 115 cm) Mottled Beige cotton fabric (Rows 1, 13, 14)
- 1 3/4 yds x 45" (175 x 115 cm) Cotton fabric for backing
- 1 3/4 yds x 45" (1.75 m x 115 cm) Cotton batting
- 3 1/2 yds x 50" (3.3 m x 125 cm) Polyester batting
- creative™ 120 Square Hoop 120x120mm (412968202)
- creative™ Elite Hoop 260x200mm (413116502)
- creative™ Endless Hoop II 180x100mm (820893096)
- creative™ All Fabric Hoop II 150x150mm (820889096)
- creative™ Quilter's Hoop 200x200mm (820940096)
- 1/4" Quilting Foot with IDT™ System(820926096)
- Narrow Edge Foot with IDT™ System(820609096)
- 40 weight Rayon thread
- Mono-filament thread
- Cotton sewing thread
- Bobbin thread
- Tear away stabilizer
- Fabric marker
- Ruler, rotary cutter and cutting mat
- Safety pins



row: 1 2 3 4 5 6 7 8 9 10 11 12 13 14

## Cutting Instructions:

Label each strip with the row number. All fabrics are cut larger for ease of hooping for embroidery, free-motion and decorative stitching. They will be trimmed to size after stitching is completed.

*Yellow cotton fabric (Stipple quilting)*  
6" x 45" (15 x 115 cm) Row 2

*Purple cotton fabric (Random Free-motion)*  
6" x 45" (15 x 115 cm) Row 3

*Fuchsia cotton fabric (Free-motion circles)*  
6" x 45" (15 x 115 cm) Row 4

*Rose cotton fabric (Diagonal lines)*  
5" x 45" (12 x 115 cm) Row 5

*Orange cotton fabric (Decorative stitch)*  
5" x 45" (12 x 115 cm) Row 6

*Beige/Grey cotton fabric (Heart Embroidery)*  
10" x 45" (25 x 115 cm) Row 7

*Beige tone on tone cotton fabric (Spiral Embroidery)*  
12" x 45" (30 x 115 cm) Row 8

*Beige Print cotton fabric*  
• 14" x 45" (35 x 115 cm) Row 9  
(Flower & Berries Embroidery)

• 10" x 45" (25 x 115 cm) Row 12 (Butterfly Embroidery)

- 16 squares 3<sup>3</sup>/<sub>8</sub>" x 3<sup>3</sup>/<sub>8</sub>" (8.7 x 8.7 cm) for half square triangles (Rows 1 & 14)
- 5 strips 2<sup>1</sup>/<sub>2</sub>" x 45" (6.5 cm x 115 cm) Binding

*Taupe cotton fabric*

- 14" x 45" (35 x 115 cm) Row 10 (Quilt Design Embroidery)
- 8 squares 3<sup>3</sup>/<sub>8</sub>" x 3<sup>3</sup>/<sub>8</sub>" (8.7 x 8.7 cm) for half square triangles (Rows 1 & 14)

*Purple velveteen fabric*

(Large bird, Multi-flower and Single flower Embroidery)  
14" x 45" (35 x 115 cm) Row 11

*Mottled Beige cotton fabric*

- 14" x 45" (35 x 115 cm) Row 13 (Flower Burst Embroidery)
- 8 squares 3<sup>3</sup>/<sub>8</sub>" x 3<sup>3</sup>/<sub>8</sub>" (8.7 x 8.7 cm) for half square triangles (Rows 1 & 14)

*Polyester batting*

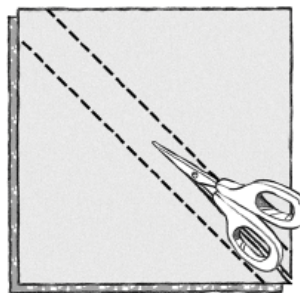
- 2 - 3" x 50" (7.5 x 125 cm) Rows 1, 14
- 3 - 6" x 50" (15 x 125 cm) Rows 2, 3, 4
- 2 - 5" x 50" (12 x 125 cm) Rows 5, 6
- 2 - 10" x 50" (25 x 125 cm) Rows 7, 12
- 1 - 12" x 50" (30 x 125 cm) Row 8
- 4 - 14" x 50" (35 x 125 cm) Rows 9, 10, 11, 13



## Assembly Instructions:

### Rows 1 & 14

1. Attach the  $\frac{1}{4}$ " Quilting Foot with *IDT™* System and thread your *creative performance™* sewing and embroidery machine with sewing thread on top and in the bobbin.
2. To make the half square triangles, mark a line diagonally on the wrong side of the 16 Beige Print squares.
3. Place the 8 Taupe squares and the 8 Mottled Beige squares right sides together with the 16 marked Beige Print squares. Straight stitch on each side of the marked line sewing  $\frac{1}{4}$ " (6mm) from this line. Cut between the two seam lines. Press seam towards the Beige Print.
4. Sew the squares together alternating the blocks (as illustrated) for a total of 16 blocks in the row. Repeat for the second row.
5. Place each strip on top of the 3" x 50" (7.5 x 125 cm) polyester batting and pin in place. Stitch around the strip to secure the strip to the batting.
6. Attach the 1A foot with *IDT™* System. Change your thread to rayon thread on top and bobbin thread on the bottom.



Cut between the two seam lines



Sew the squares together alternating the blocks

7. Select stitch 2.2.7
8. Stitch "in the ditch" on the square with the Beige Print and Mottled Beige half square combination.
9. Trim the excess batting.



stitch 2.2.7

Stitch "in the ditch"



### Prepare the Strips for Quilting

Row 2-6 is prepared in the same way. Mark the strips with a rectangle that measures  $3\frac{1}{4}$ " x  $41\frac{1}{2}$ " (9 x 105.5 cm). This will be the final cutting size of the strip after it is embellished.

Place each strip on top of a piece of polyester batting measuring 6" x 50" (15 x 125 cm).

Change your top thread, to match the strip you are embellishing.

Embellish each strip according to descriptions on the following page. You don't need to stitch much beyond the marked line since the excess fabric will be cut off after the stitching is complete.

When finished, trim the strip along the marked line.

## Free Motion Quilting, row 2, 3 and 4

Attach the Embroidery/Sensormatic free-motion foot 6A. Select stitch 1.1.1, choose Free-motion options and select Sensormatic free-motion setting.



Choose Free-motion options

Row 2 – Stipple quilt the strip.

Row 3 – Quilt the strip in a random zig zag motion.

Row 4 – Quilt the strip in a circular motion.

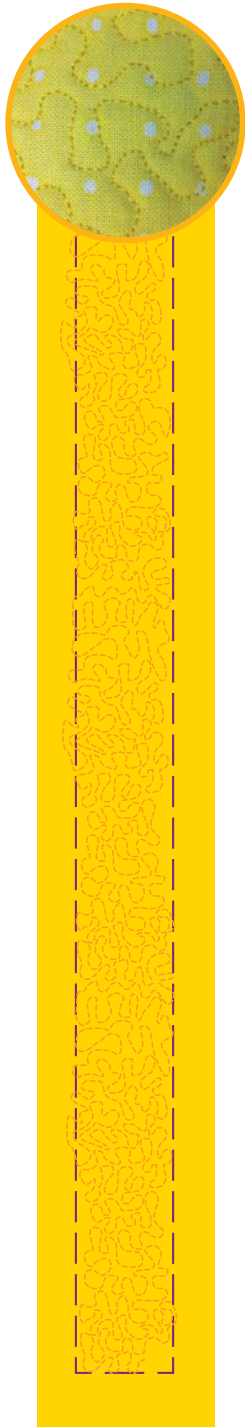
## Decorative Stitching, row 5 and 6

Row 5 – Attach the 1A foot with IDT™ System. Deactivate the Sensormatic free-motion setting.

Mark 45° degree angle lines on the Rose strip ½" apart. Select stitch 1.1.1, straight stitch along the diagonal marked lines.

Row 6 – Attach the #8 Maxi-stitch foot. Select stitch 5.5.5. and stitch three repeats of the stitch down the strip. Stitch within the marked line since the excess fabric will be cut off after stitching.

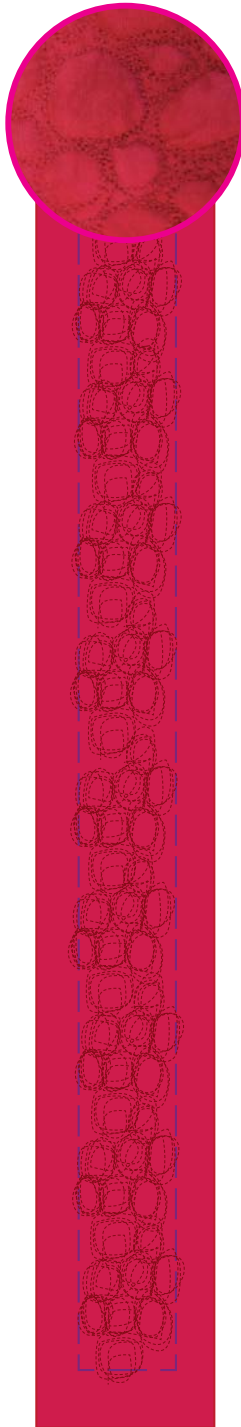
Stitch 5.5.5



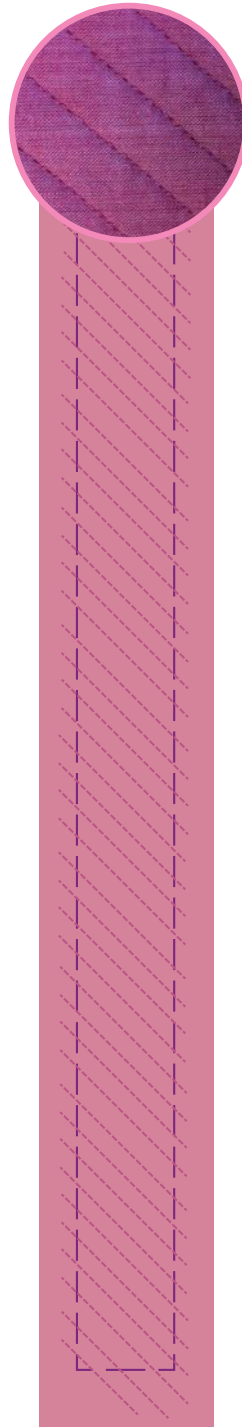
Row 2



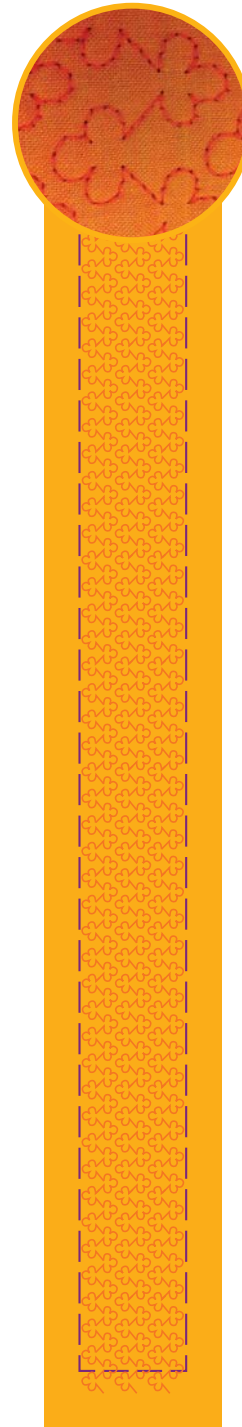
Row 3



Row 4



Row 5



Row 6

## Quilt Embroideries, row 7 -12

Set up for embroidery. Attach the embroidery unit. Attach the Embroidery/Sensormatic free-motion foot 6A. Toggle to Embroidery mode on your *creative performance*<sup>TM</sup> sewing and embroidery machine.

Mark a horizontal and vertical center line on all strips to be embroidered (as illustrated).

Place all strips to be embroidered on a piece of polyester batting the same size as the strip.

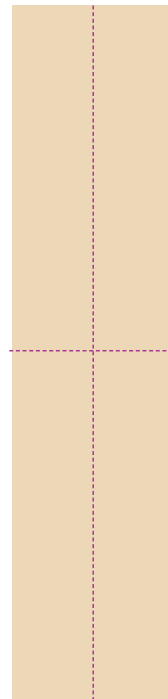
Change your top thread according to your wishes, we used a color slightly darker than the fabric to be embroidered.

Embroider each strip according to descriptions below.



Toggle to Embroidery mode

Mark a horizontal and vertical center line on all strips to be embroidered

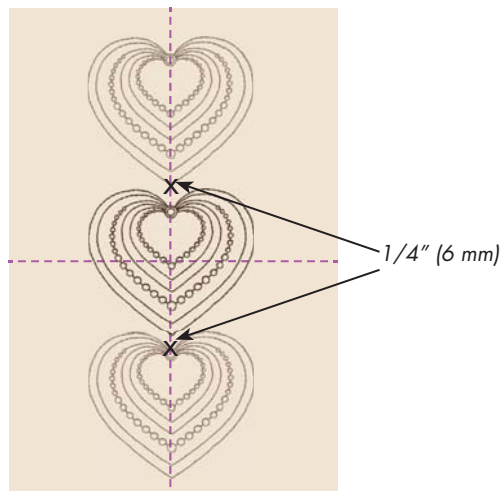
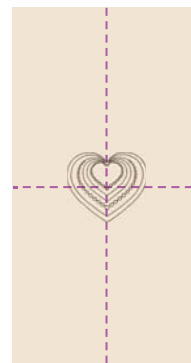


### Row 7 (Embroidered Hearts)

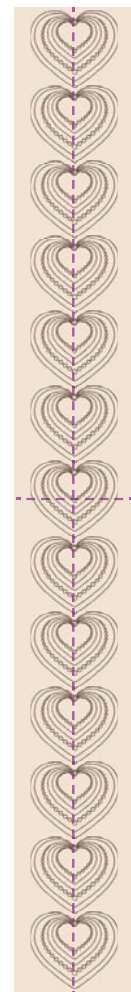
1. Hoop the fabric and batting in the *creative*<sup>TM</sup> 120 Square Hoop, be sure to place the center line of the fabric in the center of the hoop.
2. Select and embroider the heart design (# CPQ\_11).
3. Remove from the hoop.
4. Measure  $\frac{1}{4}$ " (6mm) from the center point of the heart and mark that point. Also measure  $\frac{1}{4}$ " (6mm) from the tip of the heart and mark that point.
5. Hoop the fabric and batting so that the point that you marked will match the bottom tip of/center point of the next heart to be embroidered. Use the the Precise Positioning feature feature to assist with this, refer to your Owners Manual for instructions on how to use this feature.
11. Continue to embroider above and below the center heart until you have 13 repeats in total on the strip, ensuring that you have  $\frac{1}{4}$ " (6mm) between each of the designs.
12. Trim the fabric with the embroidered designs centered to measure  $4\frac{1}{2}$ " x  $41\frac{1}{2}$ " (11.5 x 105.5 cm).



Select and embroider the heart design

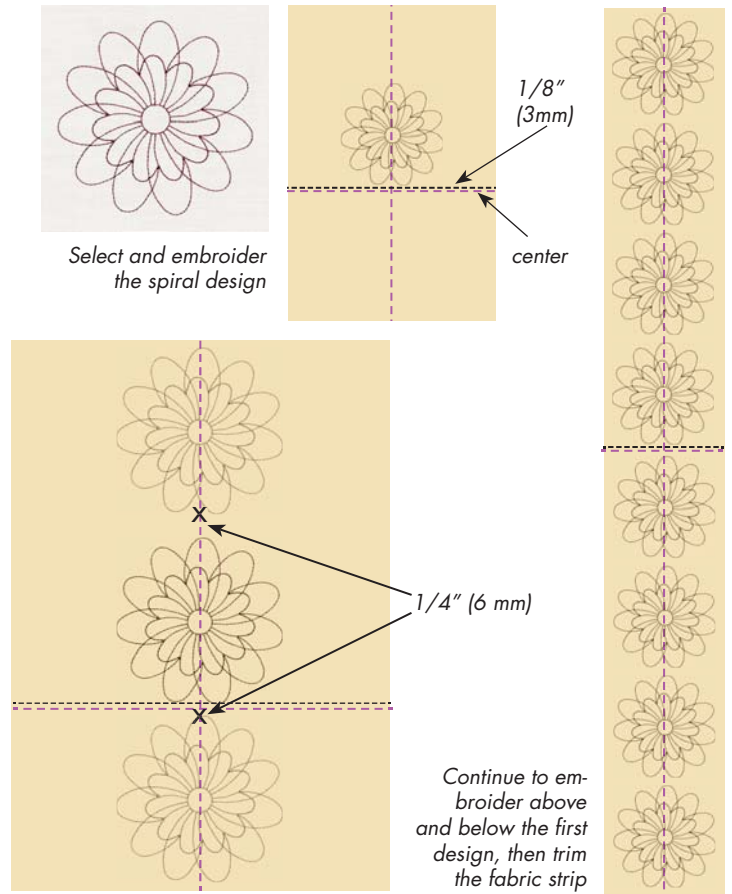


Continue to embroider above and below the first design, then trim the fabric strip



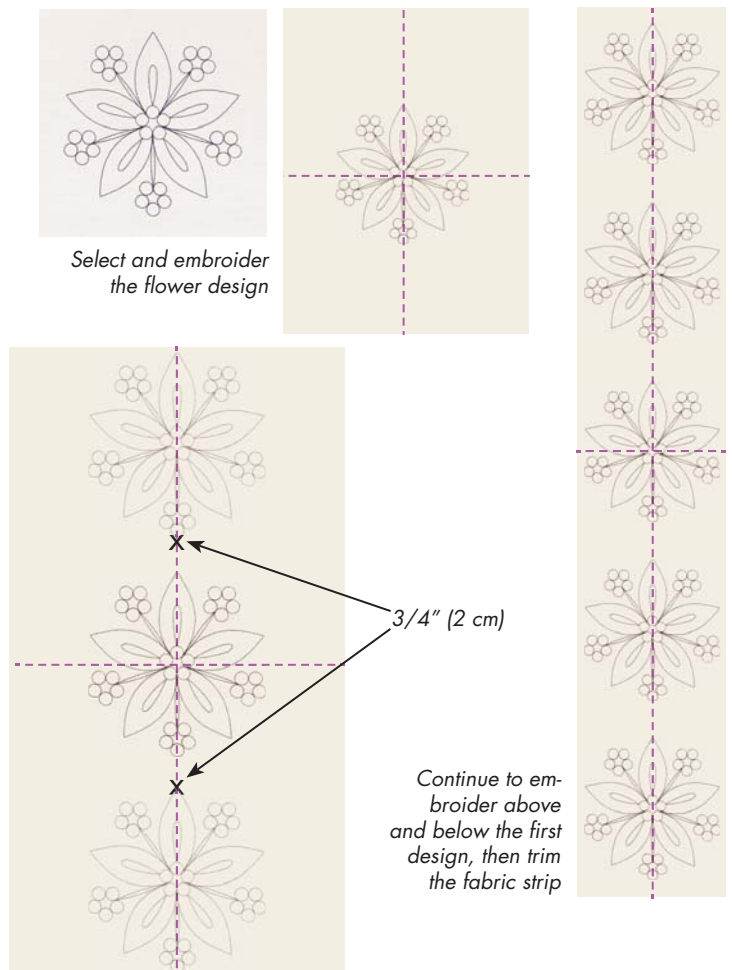
## Row 8 (Embroidered Spirals)

1. Mark  $\frac{1}{8}$ " (3mm) from the center mark on the strip.
2. Hoop the fabric and batting in the *creative*<sup>TM</sup> All Fabric Hoop II, placing the bottom of the design on the  $\frac{1}{8}$ " (3mm) mark on the strip.
3. Select and embroider the spiral design (#CPQ\_01).
4. Remove from the hoop.
5. Measure  $\frac{1}{4}$ " (6mm) from the top and bottom of the spiral and mark these points.
6. Hoop the fabric and batting so that the point that you marked will match the bottom/top of the next spiral to be embroidered. Use the the Precise Positioning feature feature to assist with this. Continue to embroider until you have 8 repeats in total on the strip, 4 above and 4 below the center line, ensuring that you have  $\frac{1}{4}$ " (6mm) between each of the designs.
7. Trim the fabric with the embroidered designs centered to measure  $5\frac{1}{2}$ " x  $41\frac{1}{2}$ " (14 x 105.5 cm).



## Row 9 (Embroidered Flower with Berries)

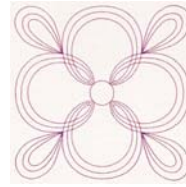
1. Hoop the fabric and batting in the *creative*<sup>TM</sup> Quilter's Hoop, be sure to place the center line of the fabric in the center of the hoop.
2. Select and embroider the Flower with Berries design (#CPQ\_14).
3. Remove from the hoop.
4. Measure  $\frac{3}{4}$ " (2 cm) from the top and bottom of the flower and mark these points.
5. Hoop the fabric and batting so that the point that you marked will match the bottom/top of the next Flower with Berries design to be embroidered. Use the the Precise Positioning feature feature to assist with this. Continue to embroider until you have 5 repeats in total on the strip, ensuring that you have  $\frac{3}{4}$ " (2 cm) between each of the designs.
6. Trim the fabric with the embroidered designs centered to measure  $8\frac{1}{4}$ " x  $41\frac{1}{2}$ " (21 x 105.5 cm).



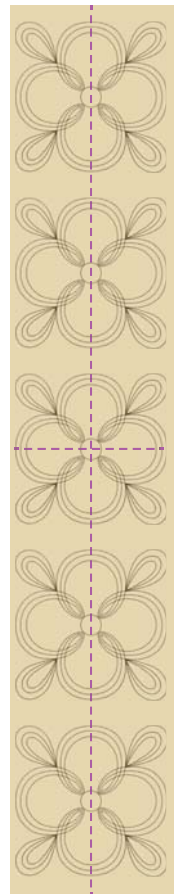
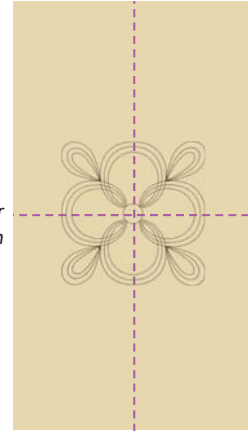


## Row 10 (Embroidered Quilt Design)

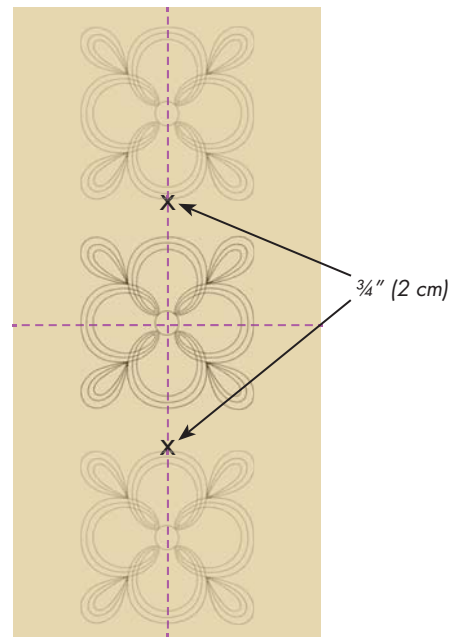
1. Hoop the fabric and batting in the *creative™* Quilter's Hoop, be sure to place the center line of the fabric in the center of the hoop.
2. Select and embroider the Quilt Design (#CPQ\_15).
3. Remove from the hoop.



Select and embroider the quilt design



4. Measure  $\frac{3}{4}$ " (2 cm) from the top and bottom of the design and mark these points.
5. Hoop the fabric and batting so that the point that you marked will match the bottom/top of the next Quilt Design to be embroidered. Use the the Precise Positioning feature feature to assist with this. Continue to embroider until you have 5 repeats in total on the strip, ensuring that you have  $\frac{3}{4}$ " (2 cm) between each of the designs.
6. Trim the fabric with the embroidered designs centered to measure  $8\frac{1}{2}$ " x  $41\frac{1}{2}$ " (21.5 x 105.5 cm).



Continue to embroider above and below the first design, then trim the fabric strip

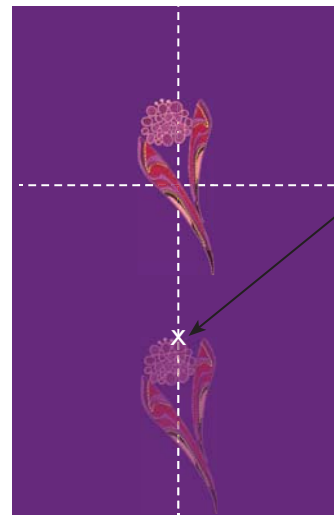
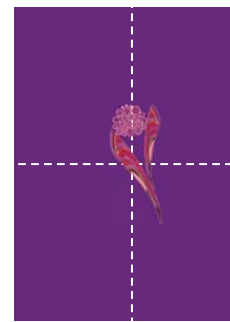
## Row 11

### (Large bird, Multi-flower and Single flower Embroidery)

1. Hoop a piece of tear away stabilizer in the *creative™* All Fabric Hoop II. You do not want to hoop the velveteen since the hoop would leave hoop marks on the velveteen. You will center the fabric with the batting in the center of the hoop and baste in place.
2. Change your thread color according to the design requirements.
3. Select and embroider the Single Flower Design (#CPE\_011).
4. Remove from the hoop and tear away the stabilizer.
5. Measure  $2\frac{1}{4}$ " (6 cm) from the bottom of the design and mark that point.
6. Hoop a piece of stabilizer and place the velveteen with batting on top of the hoop so that the point that you marked will match the top of the next Single Flower Design to be embroidered. Use the the Precise Positioning feature feature to assist with this. Baste in place. Embroider the Single Flower.
7. Repeat for the next Single Flower Design until you have three Single Flowers embroidered on the bottom half of the strip.

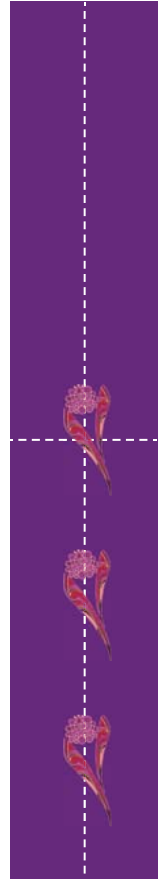


Select and embroider the single flower design



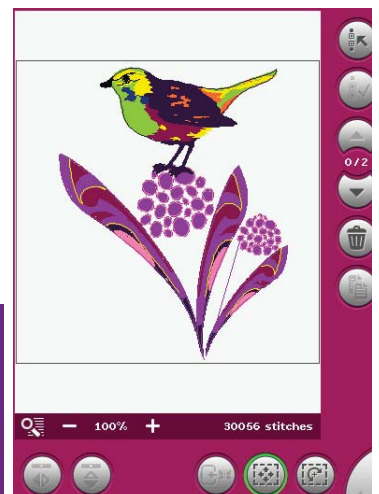
$2\frac{1}{4}$ " (6 cm)

Continue to embroider below the first design until you have three flowers

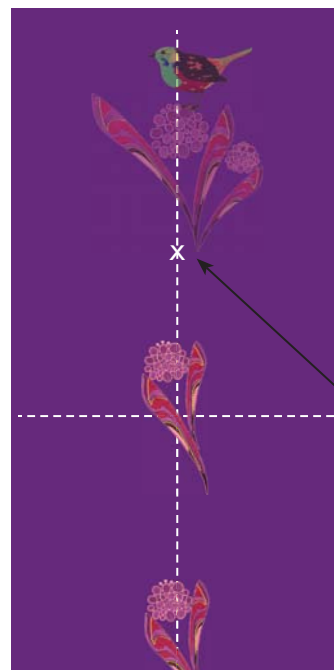


8. Clear your screen and choose the 260 x 200 *creative™* Elite Hoop. Bring in the Multi-Flower design (#CPE\_010) and the Large Bird design (#CPE\_002). Place the bird on top of the large flower as illustrated.

Combine the Multi-Flower and the large bird designs



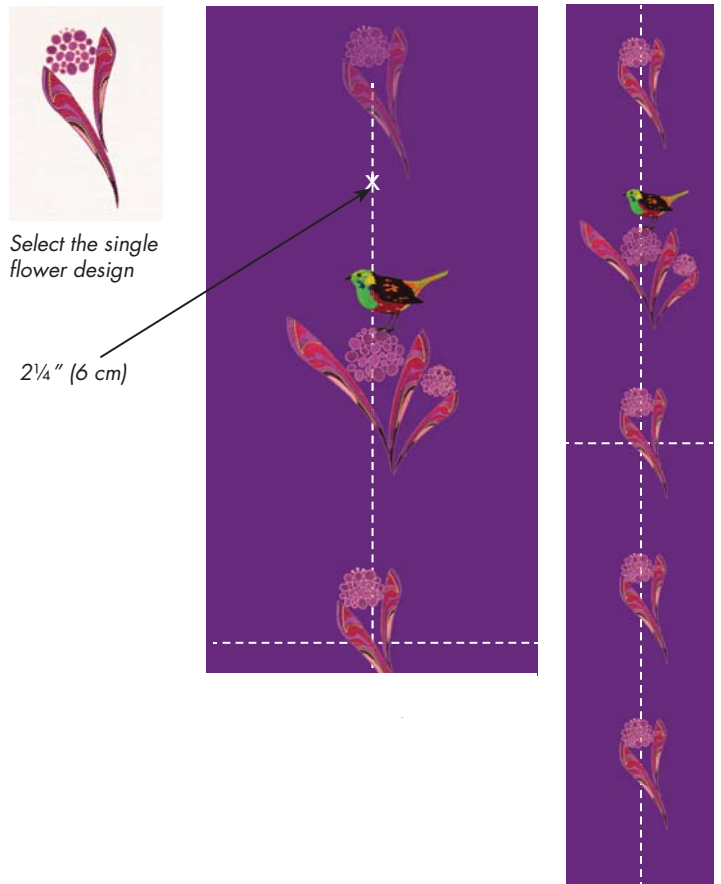
9. Hoop tear away stabilizer in the *creative™* Elite Hoop. Measure on the fabric  $2\frac{1}{4}$ " (6 cm) from the top of the center Single Flower.
10. Place the embroidered strip on top of the hoop so the bottom of the Multi-flower design will match the marked point. Use the the Precise Positioning feature feature to assist with this. Baste in place.
11. Embroider the Multi-flower/bird combined design.
12. Remove from the hoop and tear away the stabilizer.



$2\frac{1}{4}$ " (6 cm)

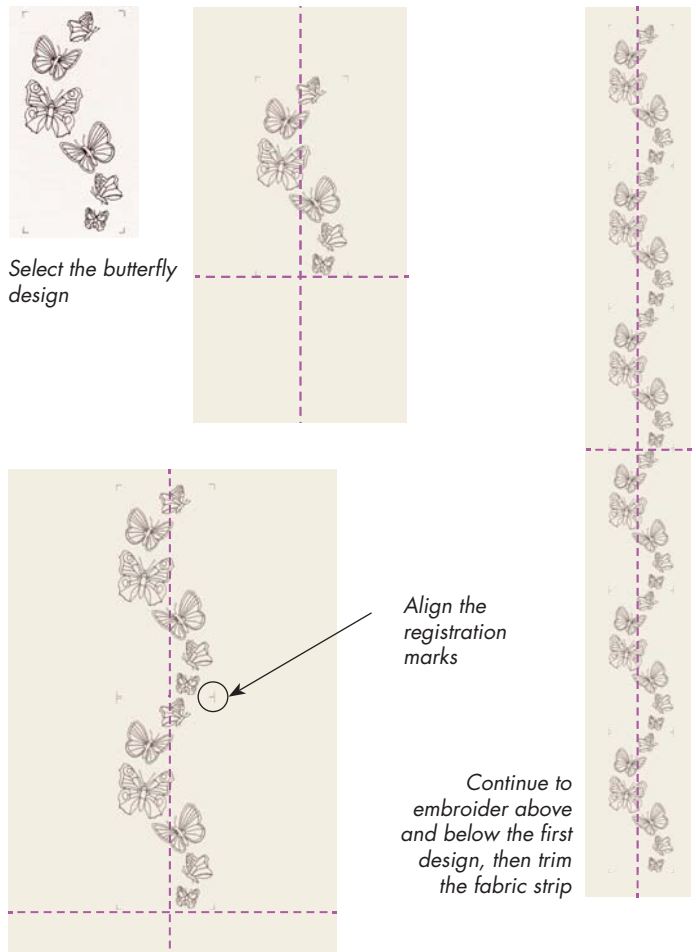


13. Clear your screen and choose the *creative™* All Fabric Hoop II. Bring in the Single Flower design (#CPE\_011).
14. Measure 2¼" (6 cm) from the top of the bird design and mark that point.
15. Hoop a piece of tear away stabilizer in the *creative™* All Fabric Hoop II.
16. Place the embroidered strip on top of the hoop so that the point that you marked will match the bottom of the last Single Flower Design to be embroidered. Use the the Precise Positioning feature feature to assist with this. Baste in place.
17. Embroider the Single Flower.
18. Remove from the hoop and tear away the stabilizer.
19. Carefully remove the basting stitches
20. Trim the fabric with the embroidered designs centered to measure 7" x 41½" (17.5 x 105.5 cm).



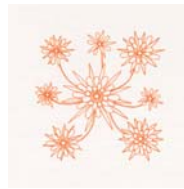
### Row 12 (Embroidered Butterfly Design)

1. Hoop the fabric and batting in the *creative™* Endless Hoop II, place the bottom registration point of the design on the center line on the fabric.
2. Select and embroider the Butterfly design.
3. Lift the upper section of the Endless Hoop II and move your fabric so that the upper registration marks of the design are at the bottom of the hoop. Lower the upper section of the hoop to secure the fabric. Use the Precise Positioning feature to align the registration marks of the next Butterfly design.
4. Embroider another Butterfly design.
5. Repeat steps 3 & 4 for the next Butterfly design.
6. After completing these 3 designs. Move the fabric down to embroider the last 3 Butterfly designs.
7. Trim the fabric with the embroidered designs centered to measure 4¼" x 41½" (10.5 x 105.5 cm)

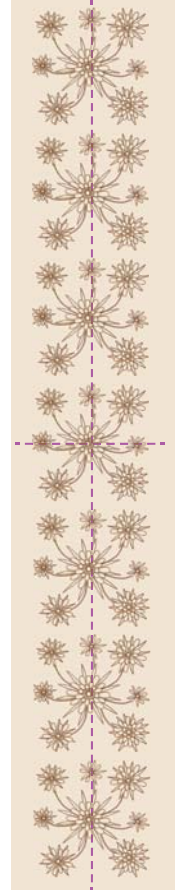
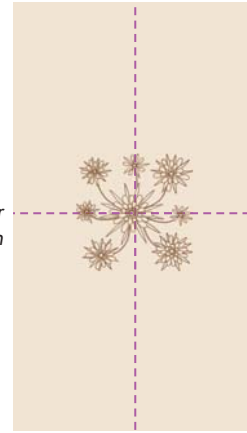


### Row 13 (Embroidered Flower Burst)

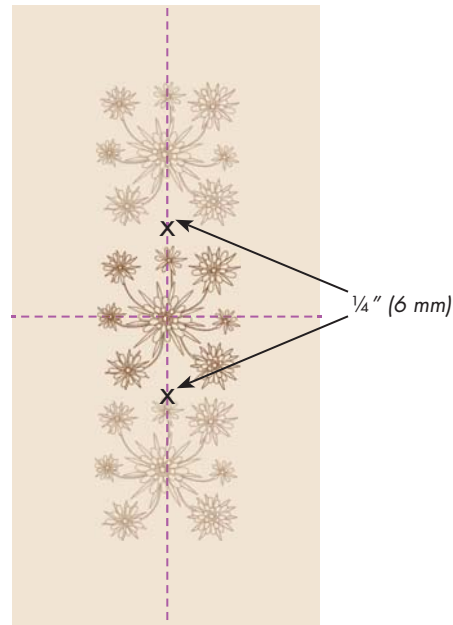
1. Hoop the fabric and batting in the *creative*<sup>TM</sup> Quilter's Hoop, be sure place the center line of the fabric in the center of the hoop.
2. Select and embroider the Flower Burst Design.
3. Remove from the hoop.



Select and embroider the flower burst design



4. Measure  $\frac{1}{4}$ " (6 mm) from the top and bottom of the Flower Burst design and mark these points.
5. Hoop the fabric and batting so that the point that you marked will match the bottom/top of the next Flower Burst Design to be embroidered. Use the Precise Positioning feature to assist with this. Continue to embroider until you have 7 repeats in total on the strip, ensuring that you have  $\frac{1}{4}$ " (6 mm) between each of the designs.
6. Trim the fabric with the embroidered designs centered to measure  $6\frac{1}{2}$ " x  $41\frac{1}{2}$ " (16.5 x 105.5 cm)



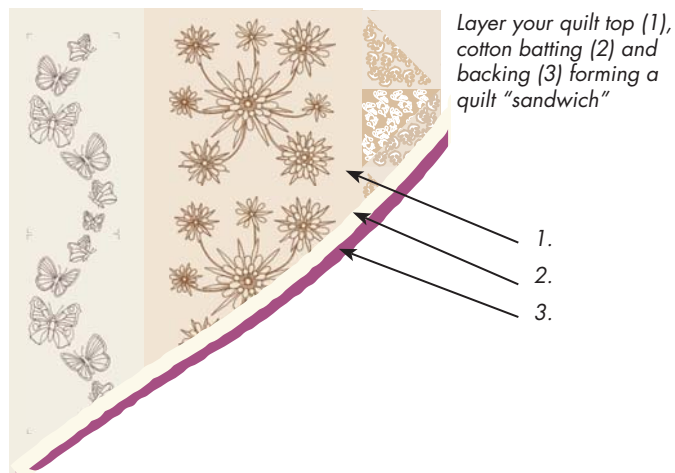
Continue to embroider above and below the first design, then trim the fabric strip

## Final Assembly

1. Toggle to sewing mode. Attach the 1/4" Quilting Foot with *IDT™* System and thread with sewing thread on top and in the bobbin.
2. Arrange the rows in order Rows 1 to 14.
3. Sew the rows together with a 1/4" (6mm) seam allowance.
4. Press the seams to one side. Use a pressing cloth so you don't melt the polyester batting.
5. Layer your quilt top, cotton batting and backing forming a quilt "sandwich". The backing should be right side down, then the cotton batting and the quilt top right side up on top. Safety pin baste the quilt through all the layers.
6. Attach the Narrow Edge Foot with *IDT™* System and thread with Mono-filament thread on top and sewing thread on the bottom to match your backing. Select a straight stitch and quilt "in the ditch" of the seams between the rows.
7. Attach the 1A foot with *IDT™* System. Thread your machine with sewing thread top and bottom. Select stitch 1.1.9 and stitch around the edge of the quilt top.
8. Trim the excess backing and cotton batting even with the edge of the quilt top.



Toggle to Sewing mode



Stitch 1.1.9



## Binding

1. Sew the binding strips together into one long strip. Press the seams open. Fold the binding in half lengthwise wrong sides together and press.
2. Place the binding on the right side of the quilt with the raw edges even. Attach the 1/4" Quilting Foot with *IDT™* System. Stitch the binding in place around the quilt. Fold the folded edge of the binding to the wrong side of the quilt and stitch in the ditch from the right side with the Narrow Edge Foot with *IDT™* System Mono-filament thread on top and sewing thread on the bottom to match your binding.

